



Installation & User's Manual



Thank you for purchasing Delicious Presets. I hope you find they very useful and that they bring your photos quality to the higher level. I wrote this instruction manual to help you start out with Delicious Presets and introduce you to basic principles of using them.

I would be glad to see the results of your work with Delicious Presets, so feel free to share your photos on our [Facebook Fan Page](#).

If you have a flickr account, that's great, because you can share photos developed with Delicious Presets on the [flickr group - DeliciousPresets.com](#)

I often share my customers photos on the [Delicious Presets Blog](#), so if you would like to show off a few photos, you're welcome!

You can also send me your photos by email:
info@deliciouspresets.com

I wish you great photos and great post-processing with Delicious Presets - enjoy!

Krzysztof Zietarski
Delicious Presets



1. Installation

Best method:

The best way to install presets is to copy your new Delicious Presets with all the folders structure straight into Develop Presets folder. This way ensures the right order of presets and their categories, so it gives you faster workflow.

Use the following locations for placing Delicious Presets:

Mac: ~/Library/Application

Support/Adobe/Lightroom/Develop Presets

XP: C:\Documents and Settings\<username>\Application

Data\Adobe\Lightroom\Develop Presets

Vista: /AppData/Roaming/Adobe/Lightroom/ Develop Presets

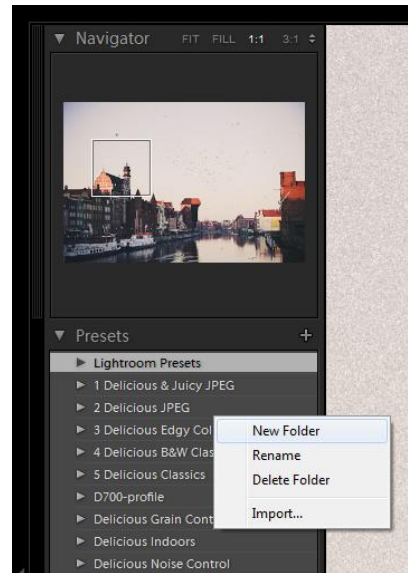
Windows 7:

c:\Users\<username>\AppData\Roaming\Adobe\Lightroom\Develop Presets\

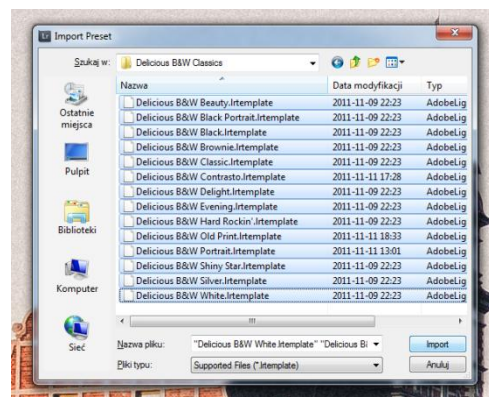
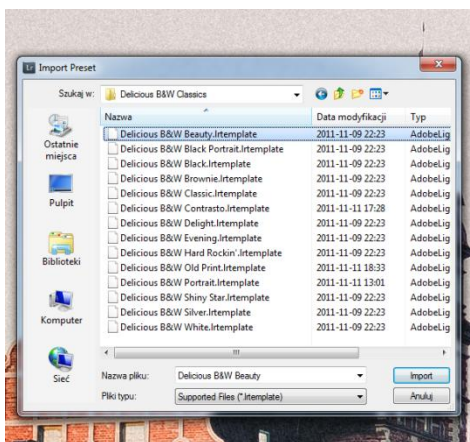


Optional way:

On the presets panel right-click and create new folder for your Delicious Presets collection. The best solution is to create new folder for each collection. For example, if you have Delicious B&W Classics and Delicious Edgy Collection, let's create two folders named as the collections. Then right click on the Delicious B&W Classics --> IMPORT



Choose all presets in B&W Collection by clicking the first file, then hold the shift key and click the last file to highlight them all, then click Import. Done! You can see the B&W Collection available in your presets panel, in the folder named Delicious B&W Classics. The same way you can import all the other Delicious Presets Collections.





2. Tuning the presets

Before applying the preset:

The effect of applying Delicious Preset could vary between the photos, as all photos vary. Often you will find it necessary to tweak the preset for the best look.

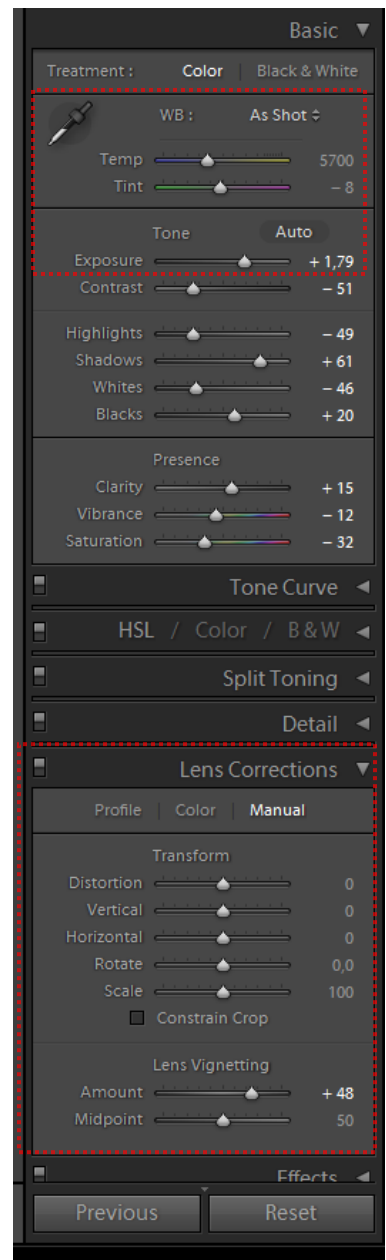
Delicious Presets affects almost all settings, except **White Balance, Exposure and Lens Corrections**. If your photo needs to correct some of them, just start editing it with setting proper sliders, then apply the preset.

It will help you with choosing right preset, as you can preview the preset's look in the Navigator window on the left panel.

You can always change the White Balance, Exposure or Lens Corrections later, after applying the preset.

JPEG note:

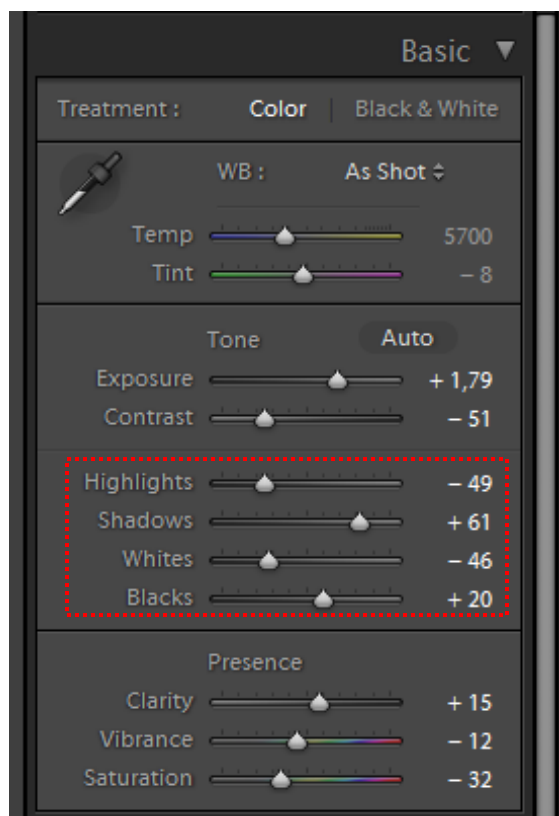
JPEG's White Balance for color photos should be originally set possibly correct. If it was set totally wrong, then using B&W presets could be the only rescue.





Adjusting the dynamic range:

The presets should fit most of your photos, but sliders in **Basic** section were meant to be adjusted to your own taste and to better fit each photos dynamic range.

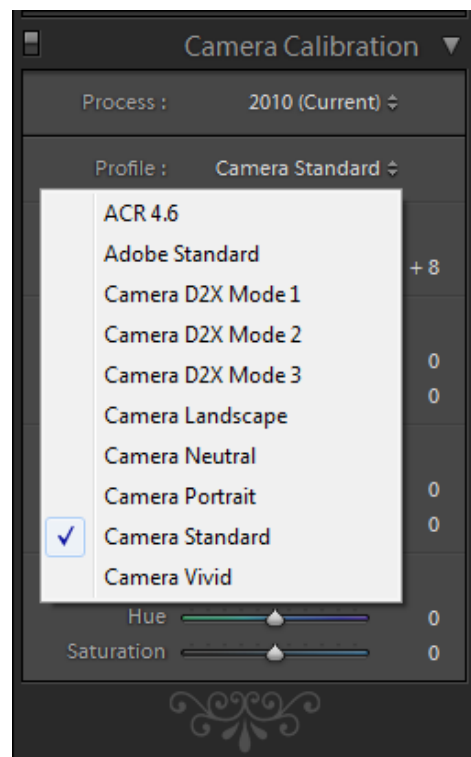
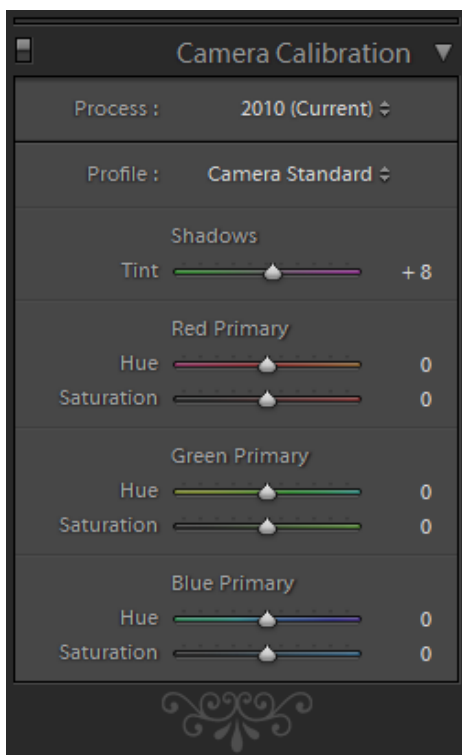




Camera Profiles

However, Lightroom interpretation of RAW files vary between cameras, so if you would like to tweak your photo deeper - try the Camera Calibration section for help and try different Camera Profiles for different color interpretations.

This can help much. Check all the profiles available for your camera and choose the best for your taste, giving great colors!

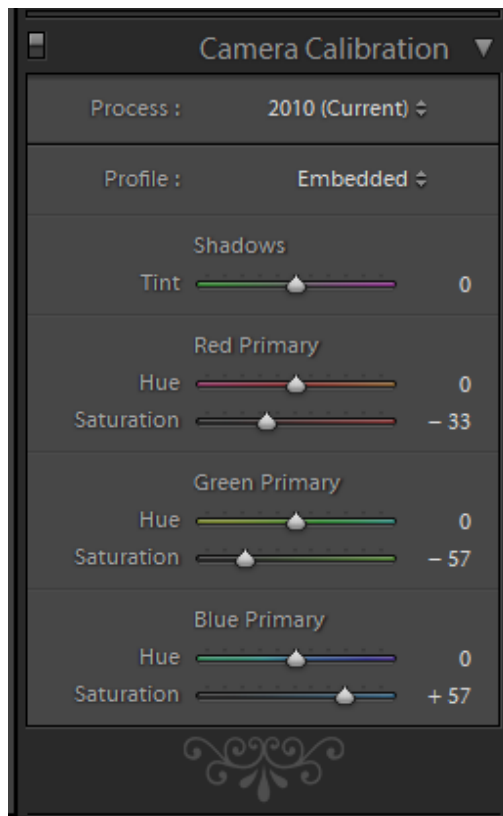


* the Current process is 2012



JPEG Camera Profiles

As your JPEG photos are already color & contrast interpreted in camera or RAW converter - there are no camera profiles to choose in Camera Calibration section, however you can tweak the three saturation slider to your taste, especially when you see some color clipping occurring.





3. Using Delicious Control

All the RAW & JPEG Delicious Presets include settings for Grain, Sharpen, Tone & Vignettes, so as you apply the preset, it overwrites the settings you may have applied before. The correct sequence to apply the presets is:

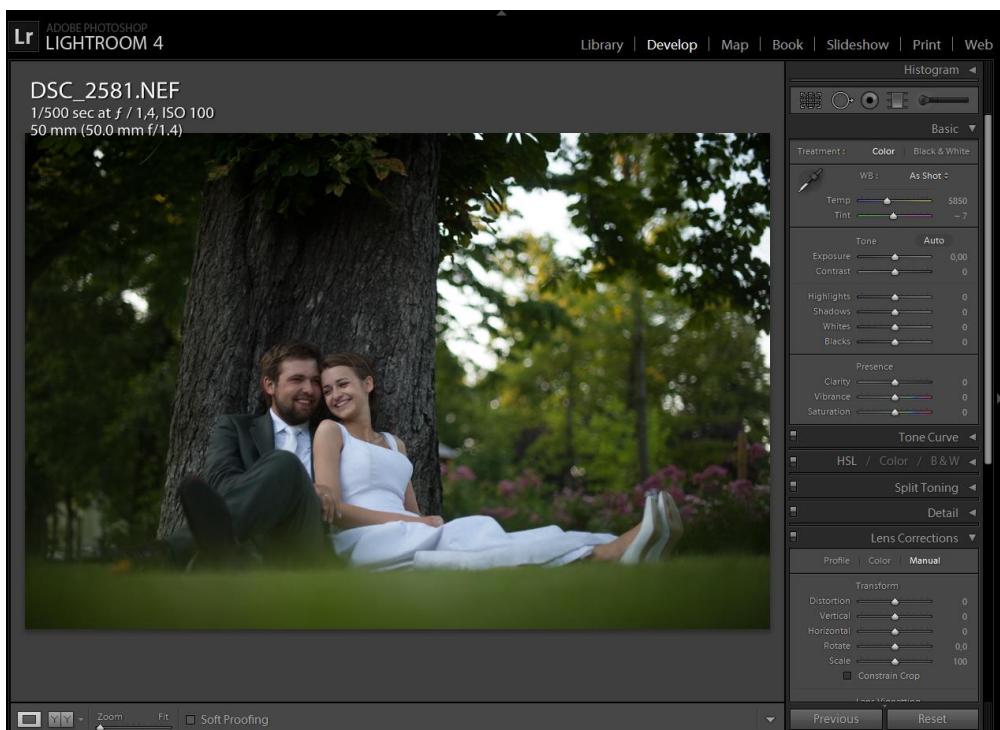
1. Delicious Preset for color or B&W
2. All the Delicious Control Presets - Grain, Sharpen, Tone, Vignettes & Frames, if you would like to.

It is important to check the Grain and Sharpen results in 100% zoom. (1:1 pixel size). To see photo in 1:1 - press space or click with zoom on the photo.



4. Examples

Let me show you the exemplary processing of photo. Here is the RAW photo I took on the wedding session with Justyna & Szymon, as opened in Lightroom with no settings:



The White Balance is quite cold. I like warmer colors, so I correct the WB to 6700K and Tint +5. The image is also underexposed, so let's add an 0.80 stop.

I shot this with my 50/1.4 lens wide open, so the obvious vignette appeared. Just add +50 to the Lens Vignetting slider, or use one of the Delicious Vignette presets to correct it.



After setting the Exposure, White Balance and Lens Vignetting correction, we can see the neutral colors it have:



I like the natural colors, so let's try one of the Delicious Colors presets.

The **Bright Portrait** is one of my favorites for such portraits!



DELICIOUS PRESETS

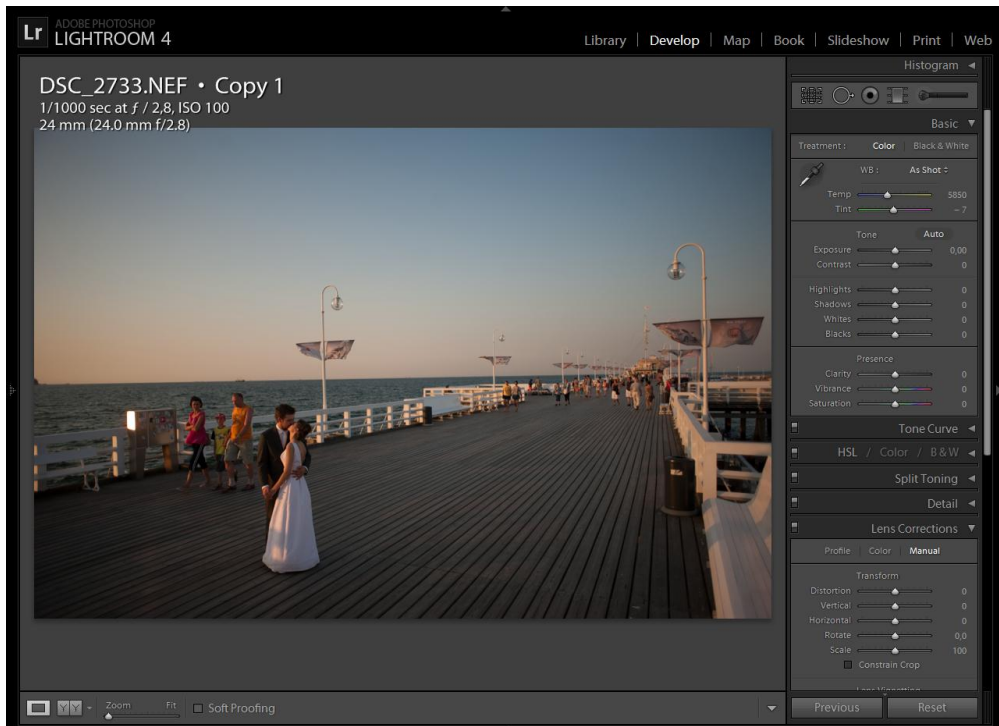


Well, Bright Portrait fits the photo quite well! Let's maybe add only a little bit of Highlights (+20), so it will shine even more:

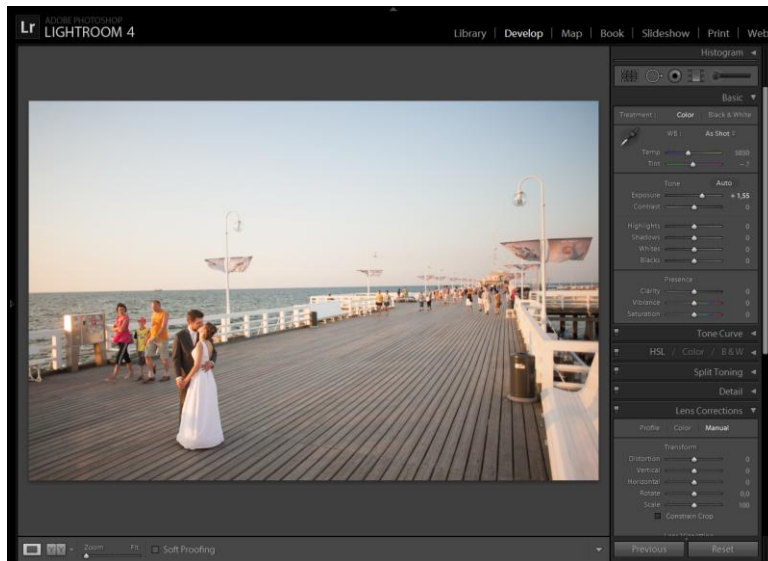




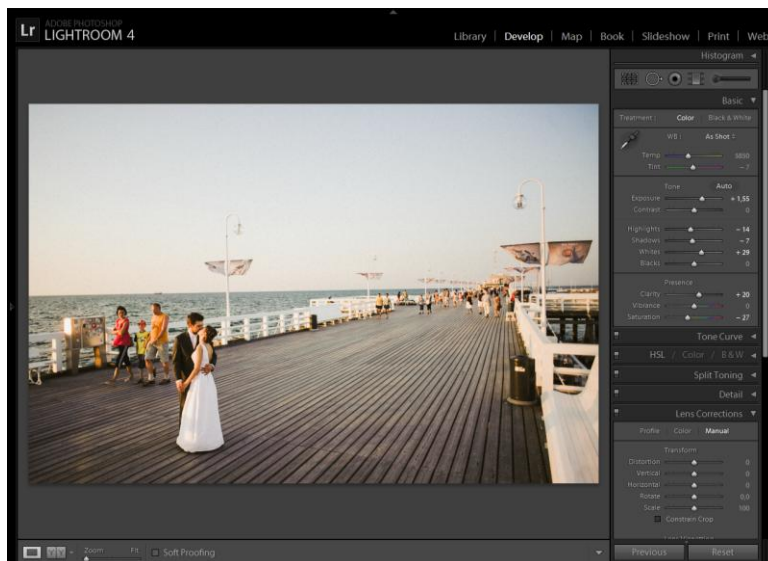
Let's find another photo and process it with Analog Story, to show you the Delicious Control Options:



I like the White Balance here, the photo is nicely warm, I love the warmth of the setting sun! I would only crop it a little to strengthen the composition and add some Exposure.



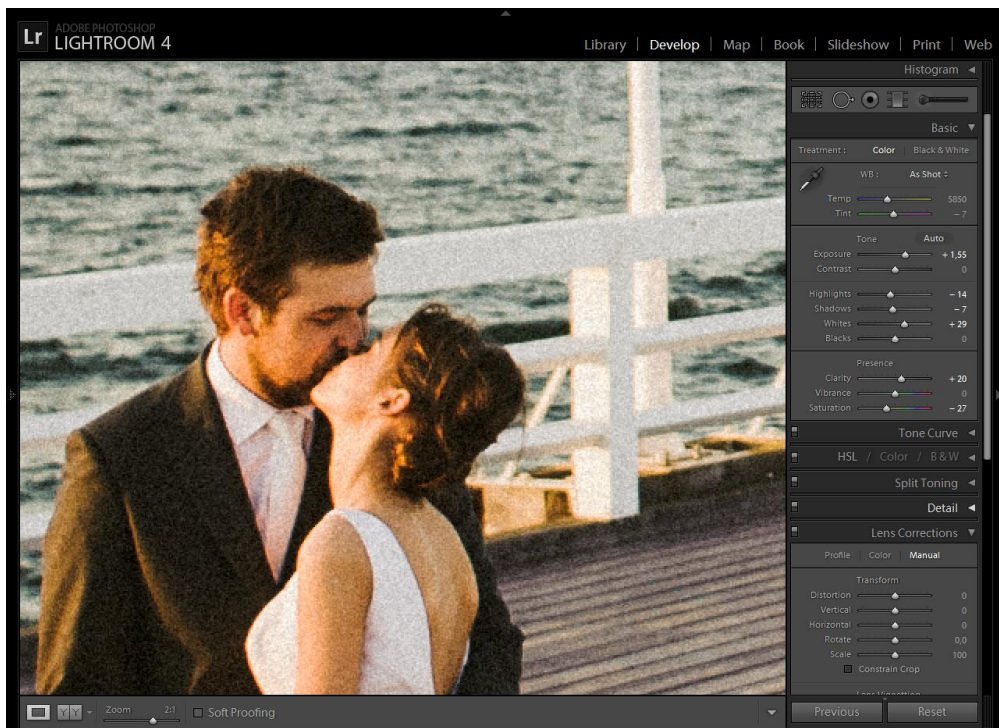
Ok, let's choose one of the Analog Story presets now. I like the Analog Warmth preset, it keeps nice contrast and has it's own character:





It looks great for me, but maybe you like different grain or sharpening settings, so let me show you how easy it is to customize your photo with Delicious Control.

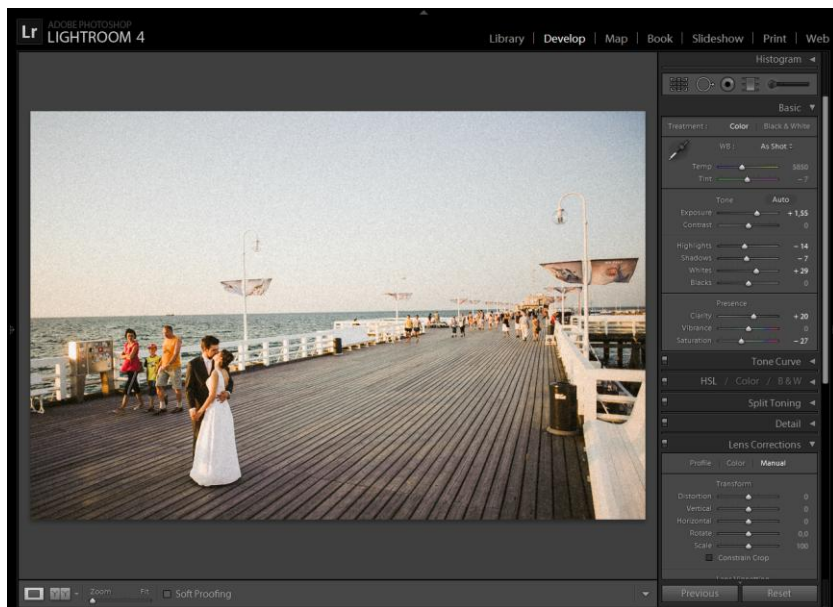
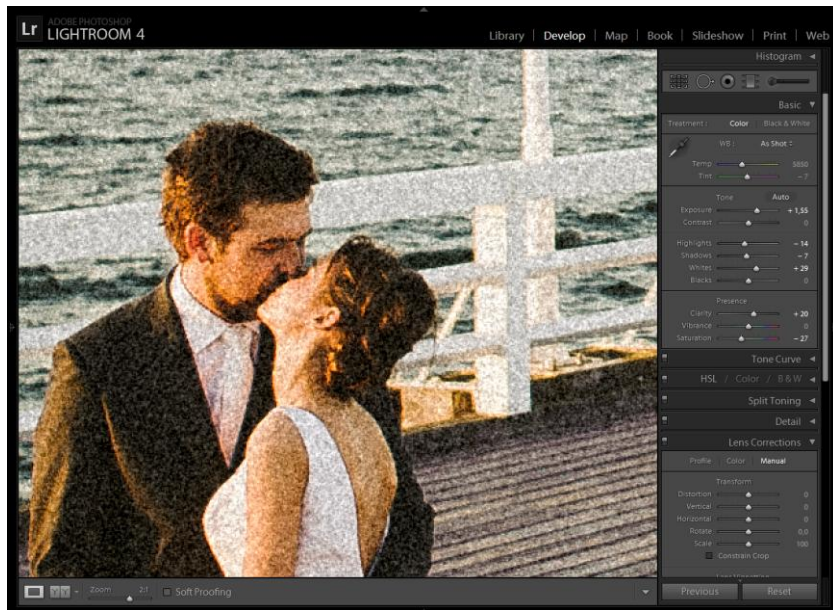
Let's see how the photo looks at 1:1 pixel size
(I used 2:1 zoom):





DELICIOUS PRESETS

I will strong settings, so you could clearly see the difference.
Let's apply Delicious Grain 4 Edgy + Delicious Sharpen 5 Hard:

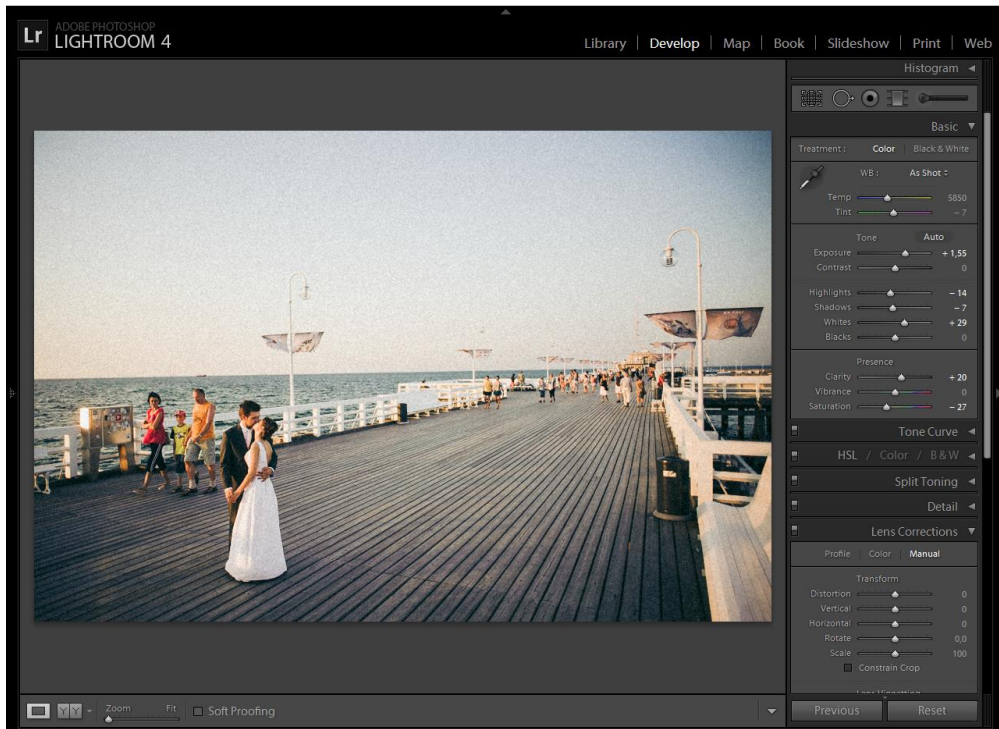




We can also add some vignetting (Delicious Vignette -02 Centro) and try some toning.

Toning was originally prepared for BW photos, but works great for creating alternative tones to the presets!

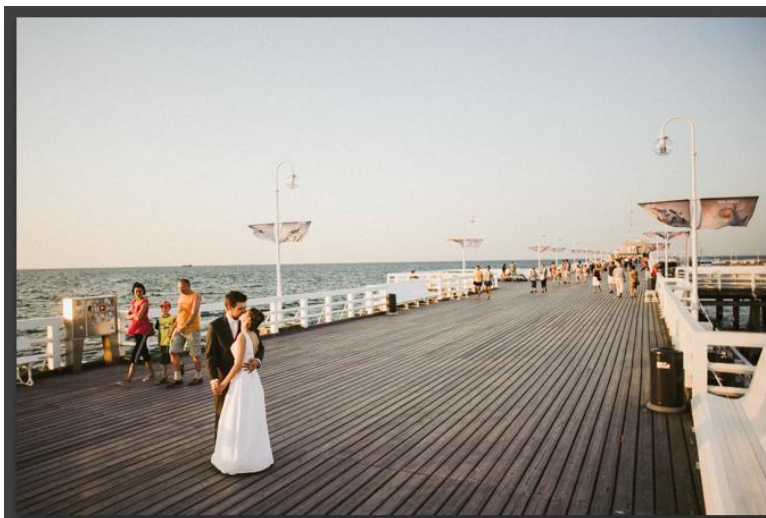
I like the bluish shadows, so let's try 2 Delicious Parisian Blue Tone. The number indicates tone strength. To add subtle tone, use lower numbers.



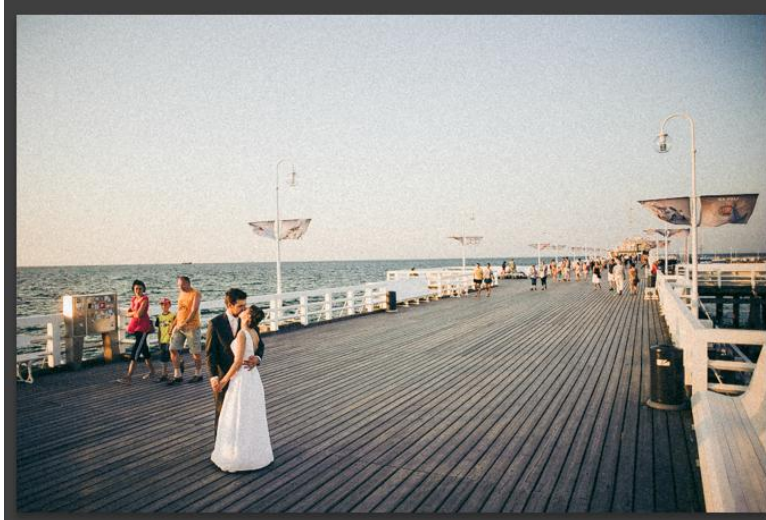


I used quite strong options to customize the original look, to make the difference more obvious.

We are all about great tones and colors and love subtle edits with it's own character, so you can of course use more subtle Delicious Control presets - that's just the matter of taste.



Analog Warmth



[Analog Warmth] + [Delicious Grain 4 Edgy]
+ [Delicious Sharpen 5 Hard]
+ [Delicious Vignette -02 Centro]
+ [2 Delicious Parisian Blue Tone]



Showcase

If you would like to share your effects, post your photos on our [Facebook Fan Page](#).

If you would like to showcase your work wider, write to us about your style with sample photos. We sometimes post showcases on [our blog](#).

Need more help?

If you need any more help, just write an e-mail:
<mailto:info@deliciouspresets.com>

**Have a nice time using
Delicious Presets!**

